



# SAPHNA Conference 2024

## **A School Nurse in Every School:**

School nurses' positive impact in addressing health inequalities in children, young people, and their families

With thanks to our Headline and Corporate Sponsors:

Headline Sponsor

**AstraZeneca**



Digital Health  
Transformation  
Service

**SchoolScreen**er



The Lancaster Model

**Tigerlily**



# Programme.

**9:00 AM – 9:30 AM**

Registration, Exhibition and Poster Displays

**9:30 AM – 10:00 AM**

'You Matter!' – Wellbeing Activity

**10:00 AM – 10:10 AM**

Welcome – Sharon White, OBE, CEO of SAPHNA

**10:10 AM – 10:40 AM**

Keynote Speaker, Sir Michael Marmot

**10:40AM – 11:10 AM**

School Nursing – Where Are We Now? SAPHNA report & recommendations

**11:10AM – 11:30AM**

Break

**11:30AM – 12:00PM**

Setting a New Strategic Direction for the Nursing & Midwifery Professions

**12:00PM – 12:30PM**

The School Nurses Role in Safeguarding & Child Protection: The Same Yet Very Different?

**12:30PM – 1:00PM**

Keeping Young People Upfront & Centre

**1:00PM – 2:00PM**

Lunch Break & Wellbeing Activities



# Programme cont.

**2:00PM -  
2:30PM**

**Influenza: The Pivotal Role of the  
School Vaccination Programme**

This promotional symposium is organised and funded  
by AstraZeneca for GB healthcare professionals only.

**2:30PM -  
3:00PM**

**School Nursing in the Times of  
COVID Research (And Beyond)**

**3:00PM -  
3:15PM**

**Celebrations & Awards**

**3:15PM -  
3:45PM**

**The Big Ambition: A Million  
Children's Voices**

**3:45PM -  
4:00PM**

**Q&A, Summation & Closing  
Remarks**

**4:00PM**

**Finish**



Please post about your time today using the  
conference hashtag:

**#SAPHNA24**



# A Warm Welcome from SAPHNA

We are delighted to welcome you to our 2024 annual conference, being held as a hybrid event at Buckinghamshire New University and online.

As many of you will already know, SAPHNA is a professional organisation dedicated to the promotion of excellence in school and public health nursing practice, taking forward the public health agenda by working in partnerships for the benefit of children and young people and the communities where they live and learn.

This year has already seen a number of important campaigns highlighting the vital role of school and public health nurses in ensuring good health and wellbeing outcomes for our children and young people. We encourage you to support this mission by reading our inaugural survey report, sign and share our petition and ask your local MP to sign the Early Day Motion to get our collective voice heard in parliament. Click or scan the QR codes below to access.

*The SAPHNA Team*

---

## Support our mission

### **The Forgotten Frontline:**

Unveiling the Realities of School & Public Health Nursing in the UK



Sign our '**A School Nurse  
in Every School**' petition



Ask your local MP to  
sign the **Early Day Motion**





# Meet The Presenters



## **Sharon White OBE, CEO of SAPHNA**

Sharon White is a qualified nurse, midwife and school nurse with over 40 years' experience of working with children, young people and families.

Sharon is CEO of SAPHNA and is recognised as a global expert on School Nursing and as a passionate advocate for children, young people and their families.



## **Sir Michael Marmot, Professor of Epidemiology at University College London**

Sir Michael Marmot has been Professor of Epidemiology at University College London since 1985 and is Director of the UCL Institute of Health Equity. He is the recipient of the WHO Global Hero Award; the Harvard Lown Professorship (2014-2017); the Prince Mahidol Award for Public Health (2015), and 20 honorary doctorates.



## **Sallyann Sutton, Professional Officer at SAPHNA**

Sallyann has worked in school nursing for almost 32 years, qualifying as a SCPHN in 2003. She has worked in leadership roles for the past 20 years leading teams, specialist areas and services. She was part of the SAPHNA committee for several years and was appointed to the role of Professional Officer in February 2023. She is also proud to hold the title of Queen's Nurse.



## **Professor Jamie Waterall, Chief Nursing Officer's Directorate**

Professor Jamie Waterall is currently leading the Chief Public Health Nurse Office, which reports to both the Chief Nursing Officer for England and the Office for Health Improvement and Disparities, which forms part of the Department of Health and Social Care.



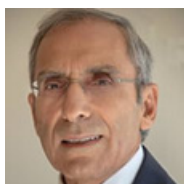
# Meet The Presenters

## **Associate Professor Melanie Hayward, Institute for Health and Social Care, BNU**



Melanie is an accomplished Associate Professor of Education in the Institute for Health and Social Care at Buckinghamshire New University. She is an Academic Advisor for SAPHNA, the Consultant Editor for the British Journal of Child Health, Chair of the National Forum of School Health Educators (NFSHE), and many other valued roles!

## **Dr George Kassianos CBE, MD (Hons), FRCGP, Family Physician**



Dr George Kassianos is Greek Cypriot and studied medicine in Poland with a scholarship from the International Union of Students (IUS) where he graduated with honours at the Medical Academy of Lodz. He trained as a General Practitioner at the London Hammersmith and St. Mary's Hospitals before joining his practice in Bracknell, Berkshire in 1979. He retired from the Practice in 2017 after 38 years of service.

## **Dr Sarah Bekaert, Senior Lecturer at Oxford Brookes University**



Sarah is a Senior Lecturer within the Children's Nursing Team. She is field lead for Research Methods in year 2 and the Dissertation module in year 3 of the Undergraduate Programme, and Dissertation module for MSc students. She also teaches on the Doctoral Training Programme. She is supervisor for 5 PhD students, and Director of Studies on one team currently.

## **Joe Lane, Deputy Director of Policy and Projects at the Children's Commissioner**

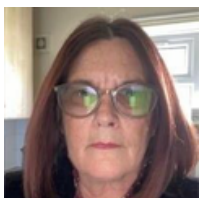


Joe is Deputy Director of Policy and Projects at the Children's Commissioner's Office. Previously he was Director of Policy at Action for Children – a large UK children's charity, worked for Citizens Advice, and was a history teacher.



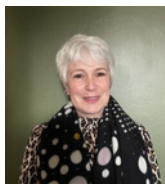
# Meet The Presenters

## **Julie Critcher, Deputy Professional Officer at SAPHNA**



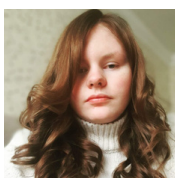
Julie is a qualified SCPHN School Nurse, as well as being one of SAPHNA's Deputy Professional Officers. Julie, who has worked as a qualified nurse since 1982 and as a school nurse since 1994, is currently Course Director for University Certificate Community Public Health Nursing at Canterbury Christ Church University.

## **Anne-Marie Gallogly, Deputy Professional Officer at SAPHNA**



Anne-Marie is a qualified SCPHN School Nurse, as well as being one of SAPHNA's Deputy Professional Officers. Anne-Marie has worked as a qualified nurse for 31 years with a range of specialities, including cardiology, respiratory, endocrinology and Emergency Department.

## **Megan Leach, SAPHNA Young Person Ambassador**



As recently appointed Young Person Ambassador, Megan will share some of her personal young carer story and then introduce other children and young people to have their say on what matters most for their health and wellbeing.

## **George Webster, TV Presenter**



George Webster is a BAFTA-winning TV presenter, actor, author, dancer, and all-around inspirational figure. At just 23 years old, George made history as the first CBeebies presenter with Down Syndrome. His charm, talent, and positive messages have captured hearts across the nation, leading to him being named one of Radio Times' most influential TV personalities in 2022.



# Meet The Presenters

## Walsall School Nurse Champions



**Walsall Healthcare**  
NHS Trust

## Long COVID Kids Choir



Long COVID Kids Choir provides online sessions aimed at children and young people living with Long Covid or young people caring for a parent/caregiver with Long Covid. Sessions provide the opportunity to join in and sing from the comfort of their own home in a relaxed atmosphere with a focus on well-being. As well as singing, they explore sound, learn songs, practice breathing exercises, have fun, and make choir friends.

## Schools and Education First Aid

0300 3020 999  
www.tigerlilytraining.co.uk



### Benefits of using the UK's largest specialist Paediatric First Aid Training provider

We are the UK's leading national provider of First Aid Training to the  
**Childcare & Education Sectors.**

A **not-for-profit** company, having provided high quality, low-cost, **fully  
accredited First Aid Training** to more than 364,000 learners.

Flexible Training solutions delivered at your place of work; or staff can attend  
our open courses, which run weekly at more than **100 UK Wide** modern and  
well-equipped training centres.

Our team of **120 fully qualified and experienced** first aid trainers receive **5\*  
feedback** by providing our clients with a **memorable, dynamic and client  
focused experience.**

## SUPPORTING CHILDREN AND YOUNG PEOPLE LIVING WITH RHEUMATIC CONDITIONS

IT IS ESTIMATED THAT 10,000 CHILDREN UNDER 16 YEARS OLD HAVE BEEN DIAGNOSED WITH  
JUVENILE IDIOPATHIC ARTHRITIS (JIA)

### YOUNG PEOPLE AND FAMILIES SERVICE

Working with a child or young person with  
arthritis or related conditions? We offer:

- Family events and youth residentials
- 1-2-1 support
- Free resources
- Advice and planning tools for schools



'You get to meet young  
people that understand  
your condition and give you  
tips and advice making you  
realise you're not alone'

'Very informative and  
interesting....a good mix of  
information and different  
viewpoints.'  
School webinar attendee

**FREE ADVICE AND  
RESOURCES FOR  
SCHOOLS:**

[www.versusarthritis.org/schools](http://www.versusarthritis.org/schools)



## Transforming Healthcare for All

Solutions 4 Health is a pioneering healthcare  
and technology company dedicated to  
transforming integrated health services  
across the UK and addressing health  
inequalities.

- CQC Registered Provider
- Community and Digitally Innovative  
Healthcare Solutions Including Virtual  
Family Health Clinics and the Happi App
- Creating Sustainable, Long-Term  
Healthcare Improvements

[www.Solutions4Health.co.uk](http://www.Solutions4Health.co.uk)

[Info@Solutions4Health.co.uk](mailto:Info@Solutions4Health.co.uk)

SAPHNA welcomes you to join as a member if you  
are a School Nurse, working with School Nurses or  
passionate about our work and values.

SAPHNA, a charity, is an internationally recognised professional  
organisation that will provide you with a whole range of professional  
benefits; joining us will also demonstrate your commitment to the  
health and wellbeing of children, young people and families.

We currently have a reach of over 20,000 comprising School Nursing  
and the Public Health Nursing workforce, Parents, Governors,  
Commissioners, Providers, Teachers, Social Workers, Third Sector  
Partners, Children's Charities and more.

School and Public Health Nurses play a critical role in ensuring that  
children and young people thrive and enjoy a healthy and happy  
childhood and, in turn, adulthood. SAPHNA commits to supporting  
you to deliver on this!



Visit the SAPHNA stand or  
**Join SAPHNA here**

<https://saphna.co/get-involved/join-saphna/>



# Meet our Sponsors & Exhibitors



## Headline Sponsor

AstraZeneca is a global, science-led biopharmaceutical company that focuses on the discovery, development, and commercialisation of prescription medicines in Oncology, Rare Diseases, and BioPharmaceuticals, including Cardiovascular, Renal & Metabolism, and Respiratory & Immunology. AstraZeneca operates in over 100 countries and its medicines are used by millions of patients worldwide.

With a proud 100-year heritage in advancing UK science, today AstraZeneca is the UK's leading biopharmaceutical company. The company is based in five different locations across the UK, with its global headquarters in Cambridge. In the UK, around 8,700 employees work in research and development, manufacturing, supply, sales, and marketing. We supply around 36 different medicines to the NHS.

For more information, please visit [www.astrazeneca.co.uk](http://www.astrazeneca.co.uk) and follow us on X @AstraZenecaUK.



# Meet our Sponsors & Exhibitors



ALTURiX

## Alutrix

Exhibitor

ALTURiX provide a growing range of licensed products to the NHS. We are a dynamic pharmaceutical company, who are committed to building and nurturing meaningful partnerships with our customers in the UK.

We are dedicated to delivering high-quality products helping improve patient outcomes, at responsible prices. This is in accordance with our values of Integrity, Partnership and Reliability. We look forward to meeting you at our stand.

Visit our website: <http://www.alturix.com/>

JOURNAL OF

## Family & Child Health

## BJCH

Exhibitor

Journal of Family and Child Health is a monthly multidisciplinary, peer-reviewed journal dedicated to professionals involved in the health and wellbeing of children and their families.

Formerly British Journal of Child Health and Journal of Health Visiting, Journal of Family and Child Health was launched to support the broad range of professionals caring for 0–19-year-olds. The journal includes articles on public health, mental health and wellbeing, safeguarding, long-term conditions and special educational needs. It provides a mix of clinical reviews, original research, best practice articles and short reports on topical issues. Experts in the field also publish commentaries on a variety of issues currently affecting practitioners.

Visit our website: <https://www.familyandchildhealth.com/>



# Meet our Sponsors & Exhibitors



## Health Edco

Exhibitor

In the 1990s, a UK/International office was launched with the support of Scott Salmans, CEO and son-in-law of Dr Spence (who began the company in Texas USA in 1964), and the cooperation of family friends Mr and Mrs Edward Church in West Sussex. From this small acorn the UK-based office continued to grow, gaining expertise from health education entrepreneur, teacher, and public health director Paul Wright, who joined WRS Group in 2004. The UK business grew to supply not only health education resources but also valuable health services, such as health exhibition vehicles, health theatre, and health training schemes.

WRS Group, Ltd - Health Edco & Childbirth Graphics - is a proud corporate member of the Institute of Health Promotion and Education (IHPE), which, for more than 60 years, has been dedicated to improving standards as well as publicising health education and promotion practice and theory.

Visit our website: [www.healthedco.co.uk](http://www.healthedco.co.uk) or send us an email: [info@wrsgroup.co.uk](mailto:info@wrsgroup.co.uk)



Digital Health  
Transformation  
Service

## DHTS

Sponsor

Over the last 10 years, our Digital Health Transformation Service at Leicestershire Partnership NHS Trust has supported many school nursing teams across the UK to set up digital ways to engage and connect with children, young people and families. This means greater choice of access for reaching school nurses alongside traditional ways of offering care.

Our services include ChatHealth, [healthforkids.co.uk](http://healthforkids.co.uk) and [healthforteens.co.uk](http://healthforteens.co.uk), the HealthForms platform, and our podcast, School Nursing Uncovered, launched in January 2024 with SAPHNA. Our NHS team worked with 80+ providers to improve digital access to services. Visit our stand for details.

- [DHTS Impact Report with a Spotlight on School Nursing](#)
- [ChatHealth website](#) or email us on [lpt.teamdhts@nhs.net](mailto:lpt.teamdhts@nhs.net)
- [Health for Teens website](#)
- [Health for Kids website](#)



# Meet our Sponsors & Exhibitors

## **School Screener**

Sponsor

Used over 2 million times, SchoolScreener® is a robust software platform that supports school nursing services in their delivery of Healthy Child Programme services. Automate admin, cut back on paper, and release more time to care.

We help nursing teams by automating and digitising many activities - such as vision and hearing screening, recording child height and weight data, online health needs questionnaires and immunisation programmes. By removing paper burdens and allowing for more effective utilisation of skill mixes - all underpinned by our strong focus on compliance and responsive customer service - we aim to allow nursing teams more time and resources to do what counts: care for our children.

Contact Manj Grewal on [manj.grewal@schoolscreener.com](mailto:manj.grewal@schoolscreener.com) or 07842 028 690

Visit our website: <https://schoolscreener.com/>

## **Solutions 4 Health**

Exhibitor

Solutions 4 Health is a pioneering healthcare and technology company dedicated to transforming integrated health services across the UK and addressing health inequalities. As a CQC-registered provider of lifestyle and clinical services, we offer innovative solutions that improve healthcare for all, with a particular focus on disadvantaged communities.

We deliver a range of public health services, including smoking cessation, weight management, sexual health, ADHD and autism support and fall prevention services to over 100,000 people annually. With our commitment to digital health, we've developed tools like the happi app, a mental health and wellbeing app that provides personalised support and guidance. The app empowers users with access to self-help resources, enabling individuals, including young people, to manage their emotional well-being.

As sponsors of the SAPHNA conference, we are excited to share our insights and solutions to improve health outcomes for all.

Visit our website: <https://www.solutions4health.co.uk/>



# Meet our Sponsors & Exhibitors



## Tigerlily Training

Sponsor

We are the UK's leading national provider of First Aid Training to the Childcare & Education Sectors.

A not-for-profit company, having provided high quality, low-cost, fully accredited First Aid Training to more than 364,000 learners.

Flexible Training solutions delivered at your place of work; or staff can attend our open course, which run weekly at more than 100 UK Wide modern and well-equipped training centres.

Our team of 120 fully qualified and experienced first aid trainers receive 5\* feedback by providing our clients with a memorable, dynamic and client focused experience.

Visit our website: <https://tigerlilytraining.co.uk/>



The Lancaster Model

## The Lancaster Model

Sponsor

The Lancaster Model, developed with Aire Innovate, provides a systematic approach for assessing individual and population needs, effectively identifying overlooked children and young people. By generating early intervention alerts, it facilitates preventative measures for those at risk of significant issues. As highlighted in the Darzi report, digital tools enhance the ability to address health risks proactively.

The model features a Universal Health Needs Assessment, aligning with various government initiatives like The Healthy Child Programme. Children and families complete assessments online, with responses immediately available to caseholders through a portal. Alerts for urgent actions are prioritised using a RAG status system, ensuring no child is missed.

For more information, visit our websites: <https://www.thelancastermodel.co.uk/> and <https://www.aireinnovate.com/>



# Meet our Sponsors & Exhibitors



## Versus Arthritis

Exhibitor

An estimated 10,000 children under 16 have Juvenile Idiopathic Arthritis (JIA). Versus Arthritis, the UK's largest arthritis charity, has a dedicated 'Young People and Families' team providing support both in clinics and outside hospitals.

We offer events, residentials, and workshops to help young people build confidence and connect with peers. Additionally, we provide resources for professionals. Our 'School Project' addresses resource gaps and barriers for schools and young people. We've created a series of short films to raise awareness of young people's needs at school.

[Click here to download or order our school booklet & the individual healthcare plan](#)

[Click here to view our school film series](#)

[Click here to order or download our schools booklet](#)

[Click here to find out more about our tracker app](#)

**Please visit our sponsors and  
exhibitors in the Atrium exhibition  
space to find out more information.**

First Created in 1999, and digitised in 2014 The Lancaster Model in partnership with Aire Innovate, provides a unique approach to supporting teams with the delivery of The Healthy Child Programme, through a validated, evidence-based, systematic method to assess the needs of individuals and populations.

The online portal generates early intervention alerts to identify and support individuals and provide teams with a host of instant, relevant and useable data to direct practice, improve outcomes and give each child a voice



The Lancaster Model

[www.thelancastermodel.co.uk](http://www.thelancastermodel.co.uk)

[www.aireinnovate.com](http://www.aireinnovate.com)



## Digital Health Transformation Service

Over the last 10 years, our Digital Health Transformation Service at Leicestershire Partnership NHS Trust has supported many school nursing teams across the UK to set up digital ways to engage and connect with children, young people and families. This means greater choice of access for reaching school nurses alongside traditional ways of offering care.

Over 140,000 messaging conversations were handled by ChatHealth messaging services last year, enabling service users to have two-way conversations with local healthcare professionals. ChatHealth social media ads were viewed over 71m times with 400k clicks to [chathealth.nhs.uk](http://chathealth.nhs.uk), helping to raise awareness of school nursing.

Local area pages on [healthforkids.co.uk](http://healthforkids.co.uk) and [healthforteens.co.uk](http://healthforteens.co.uk) have given an online presence for school nursing services to deliver relevant advice and signposting to local populations. The HealthForms platform has enabled school nursing teams to identify and support the health needs of school-aged children.

Our podcast, School Nursing Uncovered, released in January 2024 in partnership with SAPHNA, reached over 3.3k downloads, celebrating the huge value and impact of school nursing.

Our NHS team has worked with over 80 NHS providers to help them to implement digital ways of working to improve access to services. Come to our stand to learn more.



[lpt.teamdhts@nhs.net](mailto:lpt.teamdhts@nhs.net)



[chathealth.nhs.uk](http://chathealth.nhs.uk)  
[healthforteens.co.uk](http://healthforteens.co.uk)  
[healthforkids.co.uk](http://healthforkids.co.uk)



[DHTS Impact Report](#)  
[Spotlight on School Nursing](#)



BUCKINGHAMSHIRE  
NEW UNIVERSITY  
EST. 1891



# About Our Hosts: Buckinghamshire New University

Buckinghamshire New University (BNU) is a vibrant institution located in the heart of England, known for its commitment to providing high-quality education and fostering innovation. With a focus on employability and real-world skills, BNU offers a diverse range of undergraduate and postgraduate programmes across various disciplines, including health, arts, business, and technology.

BNU offers a dynamic and comprehensive School and Public Health Nursing course designed to prepare students for impactful careers in healthcare. This programme emphasises the importance of promoting health and well-being among children, young people, and families.

Students benefit from a blend of theoretical knowledge and practical experience, engaging with real-world scenarios in diverse settings. The curriculum is tailored to meet contemporary healthcare challenges, integrating public health principles with nursing practices. With a strong focus on community engagement and health promotion, graduates are equipped to deliver high-quality care and make a positive difference in their communities.

We are very thankful for BNU hosting SAPHNA's annual conference, especially to Caroline and Maciej for making it all come together!

Visit BNU's website: <https://www.bucks.ac.uk/>

## Engage

- 24/7 Digital Parental Communication.
- Reduce printing, postage and associated admin costs.
- Plan resources effectively.

## Report

- Comprehensive Reports & Interactive KPI dashboards.
- Facilitates effective planning and trend analysis.
- Facilitates data driven decision making.



## Screening

- Eliminate transcription errors.
- Monitor progress in real time.
- Identify onward referrals.



## Feedback

- Automated bulk result letter generation.
- Parents receive notification via their preferred method.
- Ability to send ad hoc information.



**Digitise and Automate  
the Healthy Child  
Programmes**

**SchoolScreener**



”

*...easy to use and  
delivered benefits rapidly,  
enabling non-clinical staff  
to deliver screening across  
the county.*



## A YEARS WORTH OF TAR!

THEY'LL BE GASPING IN DISGUST AND SHOUTING "GROSS!"  
AS THEY SEE WHAT MUCKS UP A SMOKER'S LUNGS.

VISIT [WWW.HEALTHEDCO.CO.UK](http://WWW.HEALTHEDCO.CO.UK) TO SEE 1,000'S OF HEALTH  
EDUCATION RESOURCES FOR SCHOOL AND PUBLIC HEALTH NURSES



**HEALTH EDCO**  
Childbirth  
graphics



# Exhibition & Poster Displays

In the main atrium space, we have our exhibition and poster displays. Please visit our excellent exhibitors and take the opportunity to see the fantastic poster submissions.

## Posters

SAPHNA put a call out for posters that demonstrate innovative approaches to supporting the health and wellbeing of children and young people.

Thank you to all who have supported this year's conference with a poster. The innovation to support children, young people and families is inspiring! There is a wide range of initiatives, so please do visit and discuss with the poster creator to find out more.

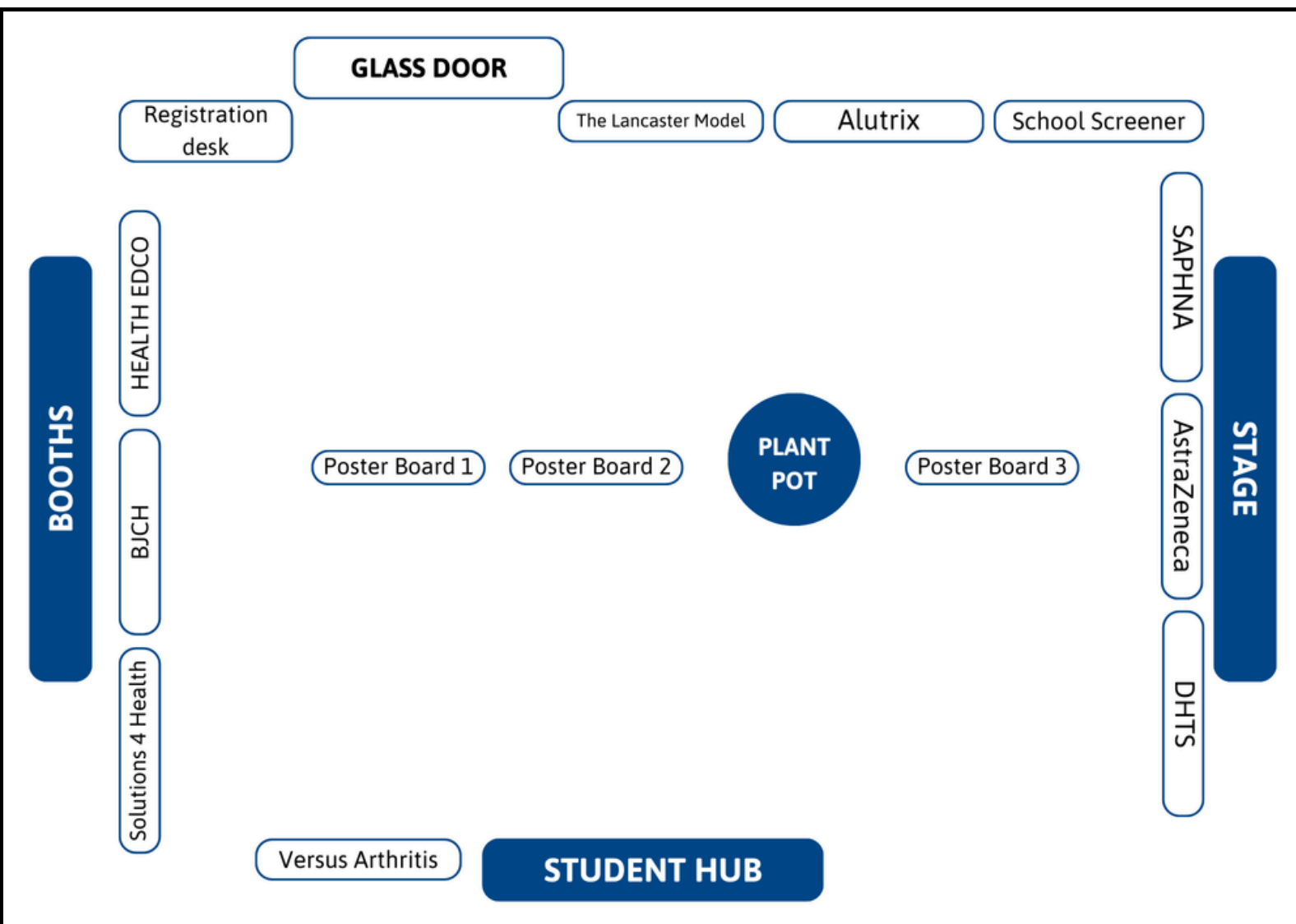
The SAPHNA School Nurse Student Awards submissions will also be available to view, and we will be announcing our winner during the conference.

## Exhibition

You can find all of the exhibitors within the main atrium - see the exhibition map on the following page.



# BNU Atrium: Exhibition Map



# Corporate Sponsorship

Unlock New Opportunities: Reach and Engage Thousands of Nurses by Partnering with SAPHNA. Contact us today for a quote. Bespoke packages available.



## Bronze

- ✓ Corporate membership
- ✓ Advertising space on our website for 12 months
- ✓ Half-page advertising space on our quarterly newsletter for 12 months
- ✓ 500 word article in our quarterly newsletter for 12 months
- ✓ Social media posts on all our channels (once per quarter, for 12 months)

## Silver

As Bronze, plus presence at our annual conference:

- ✓ Standard exhibition stand
- ✓ Two complementary delegate tickets
- ✓ Branding and company links on conference materials - programme, website
- ✓ Delegate pack insert (e.g. flyer, resource, giveaway)
- ✓ Acknowledgement within the conference by the Chair
- ✓ Question included in the delegate evaluation survey
- ✓ Data of conference delegates for marketing
- ✓ Acknowledgement as a sponsor via one social media post on all our channels

## Gold

As Silver, plus:

- ✓ Headline advertising space on our website
- ✓ Premium exhibition stand at our annual conference
- ✓ One company branded webinar
- ✓ Four sponsored digital mailouts to our membership for 12 months

All prices are inclusive of VAT.

**Contact Us Today**

 [www.saphna.co](http://www.saphna.co)

 [info@saphna.co](mailto:info@saphna.co)

 07828 409688

# Corporate Sponsorship



## Why partner with SAPHNA?

- ✓ Access to your target market including:
  - National, UK and global departmental leads
  - Strategic, managerial, and front-line practitioners
  - Commissioners
  - Providers
  - Local Authorities
  - Schools/Education providers
  - Social Care
- ✓ Through SAPHNA's extensive network of experts and partner organisations, access the opportunity for:
  - Research
  - Publications
  - Influencing at a National level
  - Shaping and driving forward the nursing profession
  - Improving children and young people's health and wellbeing outcomes
- ✓ Increase your brand awareness, exposure and reach through our:
  - Membership of over 2,000 school and public health nurses, as well as other professionals dedicated to improving outcomes for children and young people
  - Over 95,000 website visitors per year
  - Over 4,000 followers on our social media channels
  - Mailing list of over 4,000
- ✓ Connect and engage with an expert audiences - gather insight, data and evidence
- ✓ Enjoy the credibility of being associated with our globally respected professional organisation



# Please take a moment to share your feedback:



Click or scan  
the QR code

With thanks to our Headline and Corporate Sponsors:

Headline Sponsor



Digital Health  
Transformation  
Service

SchoolScreeners



The Lancaster Model

Tigerlily